



HANDCRAFTED TERRAZZO

FLOORINGS THAT CONSIST OF MARBLE QUARTZ, GRANITE, GLASS OR SUITABLE CHIPS, SPRINKLED AND Poured WITH A BINDER THAT IS CEMENTITIOUS.

THE BFT STORY

1922

OUR JOURNEY

Jamshed Mehta, a colleague of Mahatma Gandhi, inspired the young Pheroza Sidhwa by saying "India needs both economic and political independence".

Pheroza borrowed money, and started a tile manufacturing unit along with nephew Rustom, and friend Jamshed. Thus, in 1922, was born The Bharat Flooring Tile Company. In the fishing village of Mora, Uran, where the family once made liqueurs from fruits and flowers. Without electricity, water or telephone service. With only fishing boats to carry goods and people - when the weather was fair!

1923

OUR FIRST CLIENT

SIR COWASJI JEHANGIR

Still there after 93 years! Sir Jehangir HC Jehangir testifies "... we are very happy to inform you not only are the tiles still existing and in excellent condition but are much admired by ourselves, by many of our tenants and by visitors to the building. In fact, we like the tiles so much we do not allow them to be replaced by any of our tenants."

1923-1935

THE RAJ ERA

"Equal to the world's best" was the motto. Many princely residences were tiled by the Bharat Tiles Company; amongst them for their Highnesses, the Maharajas of Bansda, Bikaner, Gwalior, Jodhpur, Kolhapur. Umaid Bhavan Palace retains them still and many others. Even the British could not resist using Bharat's 'Swadeshi' tiles in their Governors' houses, Universities, the Mint, and other public buildings!.

1935-1940

ART DECO ARRIVES

Art Deco Arrives in the decade 1930-1940, Hollywood entered the country with a bang and Bombay saw a number of new cinema houses - Metro, Eros, Excelsior, Broadway, Capitol, and Roxy - all tiled by Bharat. Those years saw the birth of the Art Deco phase of architecture for which Mumbai has global recognition. Almost every building in the Art Deco precincts of Oval, Marine Drive, Malabar Hill, Altamount Road and other places across Mumbai and beyond had Bharat Tiles.

1940

GRINDWELL ABRASIVES IS BORN

World War II. Cement only for defence purposes! Bharat closed, but the owners started India's first grinding wheel company in their Uran factory.

1950

THE TERRAZZO ERA

Bharat responded with Premium Terrazzo Tiles, made of the whitest stone chips money could buy, as well as chips of the best Italian and Indian marble, providing cool, clean and beautiful Terrazzo or mosaic floors that are cherished even today throughout India.

1960

STILAN® DEFINING HEAVY DUTY

Stilan® - a heavy duty tile, with ingredients next to diamonds in hardness, have taken millions of footfalls at CST and Flora Fountain.

Stilan, a skill for which Bharat is famous for, is being taught to new craftsmen for restoring old floors and creating new ones

1999

HERITAGE RENAISSANCE

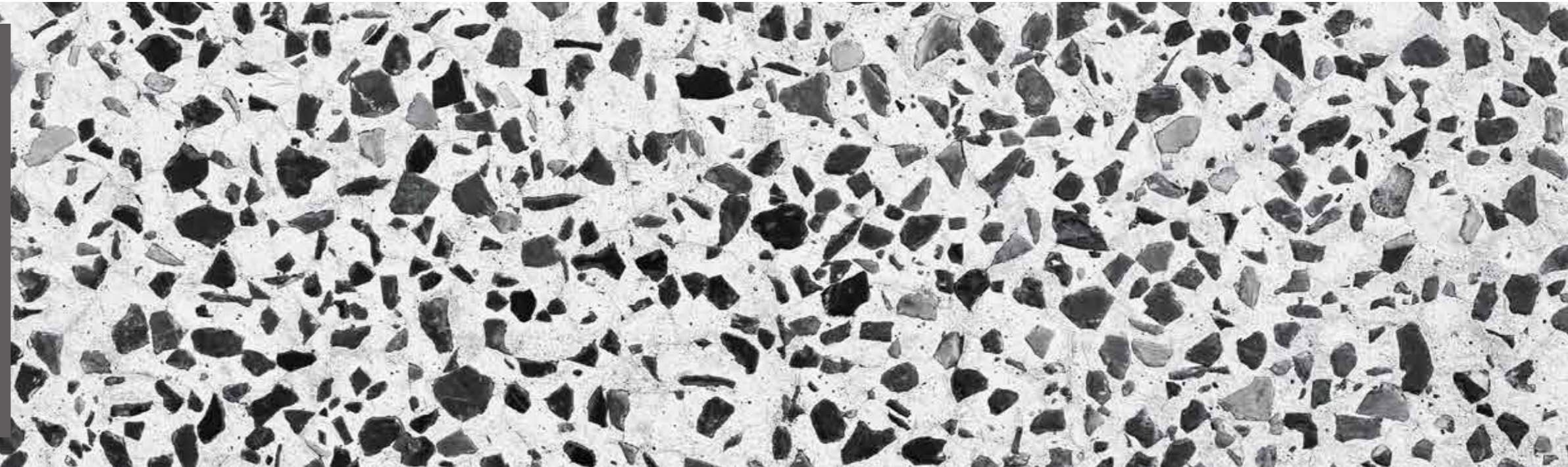
Rediscovering its original molds and catalogues, Bharat's Heritage™ range was re-launched in 1999 at the first Kalaghoda festival.

Each Heritage™ Tile is handcrafted and then mechanically processed for strength and longevity. Unlike mass produced products, some irregularities in line and some variation in shades are the hallmark and charm of handcrafted products. Continuing the grand tradition of past centuries, even today the tiles are made to order, to satisfy individual design and colour preferences.

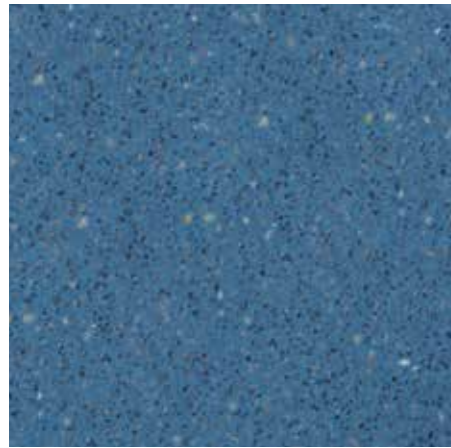
After the War was over, the Victorian and Edwardian decorative tiles went out of style and Bharat Floorings responded with Premium Terrazzo Tiles. Made of the whitest stone chips money could buy, as well as the best Italian and Indian marble, providing cool, clean and beautiful Terrazzo or mosaic floors that are cherished even today throughout India.

Terrazzo is a composite material poured in place in the form of tiles, slabs or decorative surfaces for the floor and wall treatments.

It consists of marble quartz, granite, glass or suitable chips, sprinkled and poured with a binder that is cementitious. Terrazzo is cured, ground and polished to a smooth surface or otherwise processed to produce a uniformly textured surface.



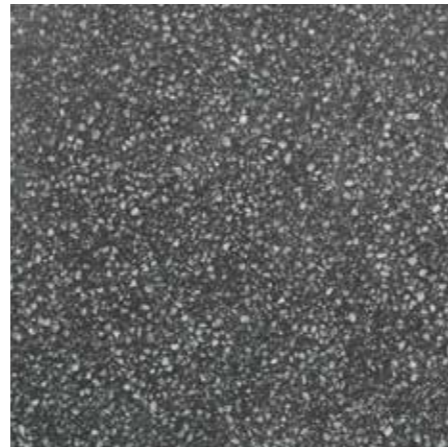
ART DECO RANGE



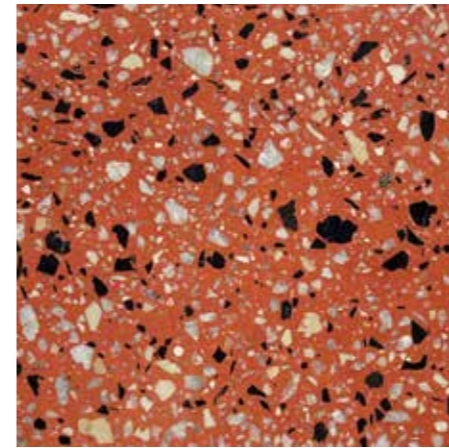
Chinese Blue with White
T1 Chips



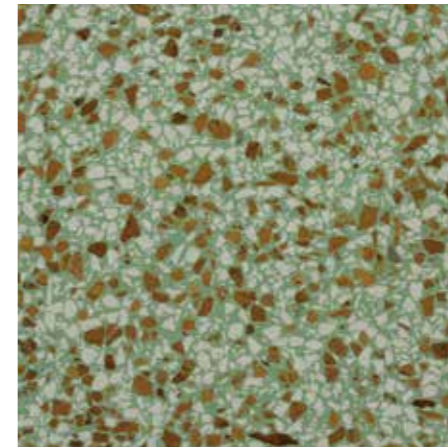
Sunshine Yellow with Golden Yellow
T1 Chips



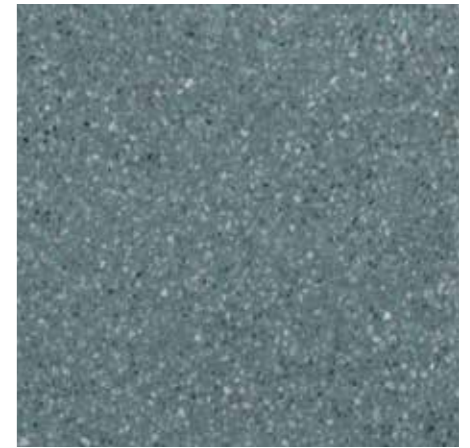
Black with Snow White
T1 Chips



Terracotta Red with Mix
T3 Chips



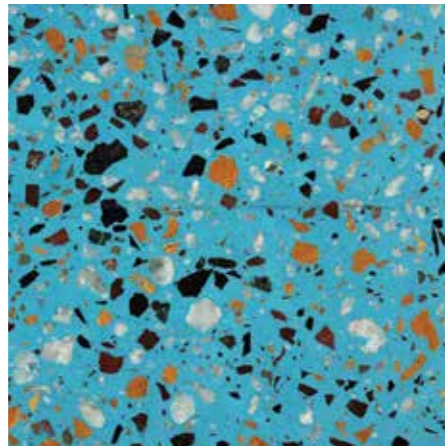
Jade Green with Mix
T2 Chips



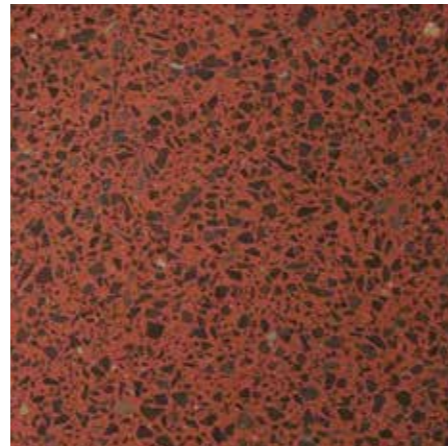
Blue Lagoon with Mix
T1 Chips



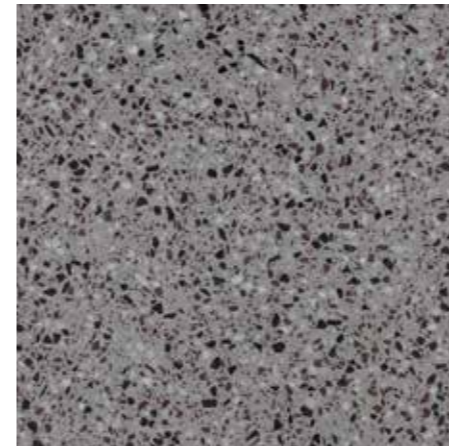
Dark Green with Black
T1 Chips



Sea Blue with Mix
T3 Chips



Deep Red with Black
T2 Chips



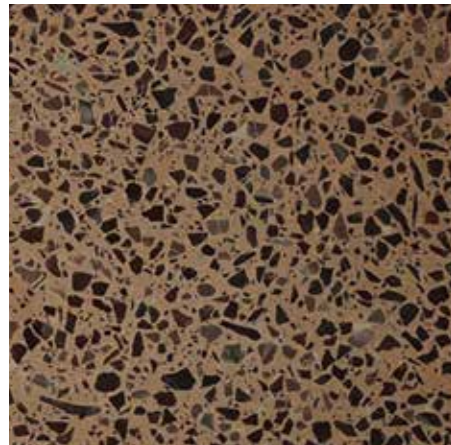
Silver Grey with Mix
T1 Chips



Sunshine Yellow with Golden Yellow
T1 Chips



Grey with Black
T2 chips



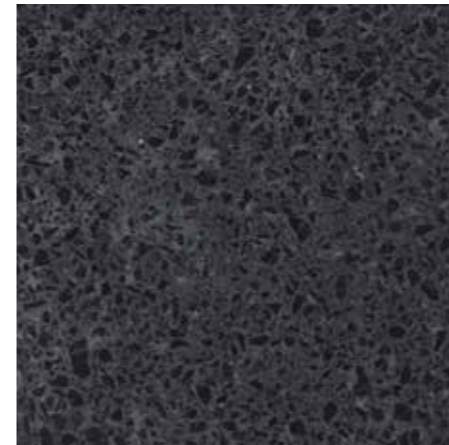
Mushroom with Black
T2 Chips



White with Snow White
T1 Chips



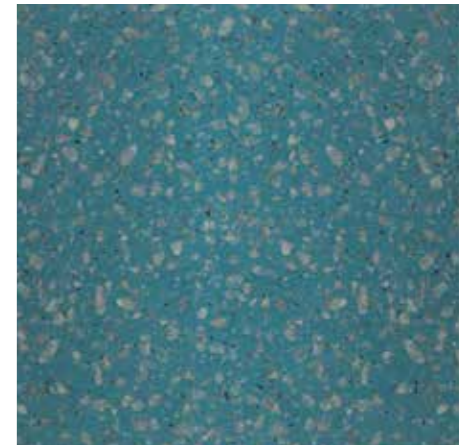
White with Lemon Yellow
T3 Chips



Black with Black Mix
T2 Chips



Macao with Mix
T1 Chips

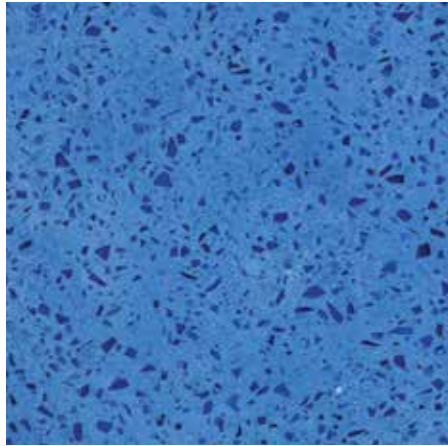


Sea Blue with Snow White
T2 Chips

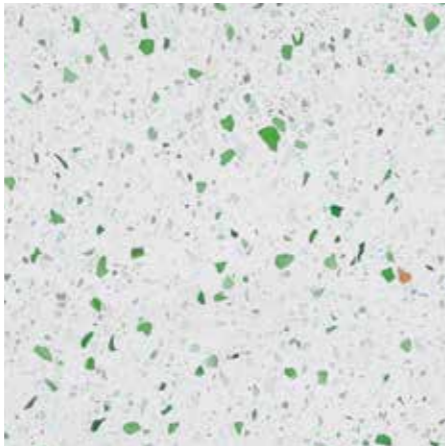
Art Deco remains one of the most sought after varieties in the range. During the Art Deco period of Mumbai's History, Bharat's Heritage™ tiles became less popular, and were replaced with Terrazzo tiles which were laid in geometric patterns.

Initial offerings of Terrazzo floors were supplemented with borders of Heritage™ tiles, but soon Terrazzo completely took over as the flooring of choice in modern buildings. Bharat's Art Deco range has 30 background colours and a wide variety of chips & chip sizes with which to play. The chips available range from Jaisalmer Stone, Cuddapah, Lemon Yellow to Udaipur Green and Snow White.

ECOSTONE RANGE



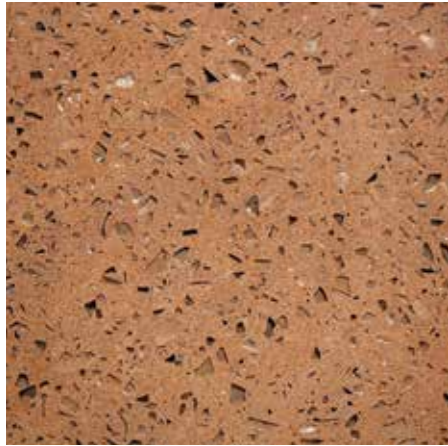
Chinese Blue with Glass
T2 Chips



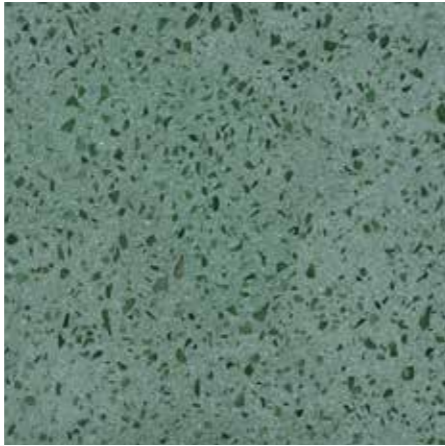
White with Glass
T2 Chips



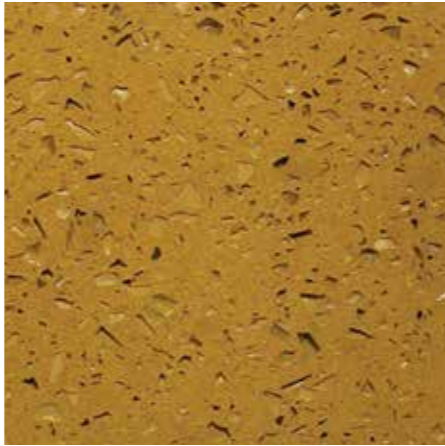
Silver Grey with Glass
T2 Chips



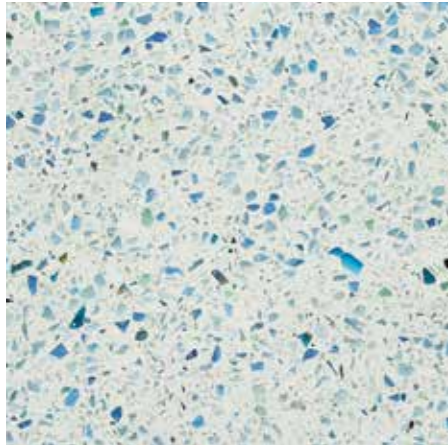
Mushroom with Glass
T2 Chips



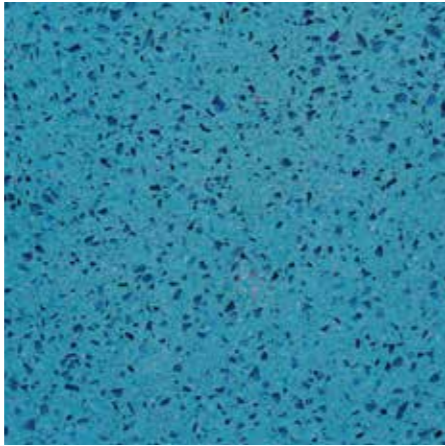
Dark Green with Glass
T2 Chips



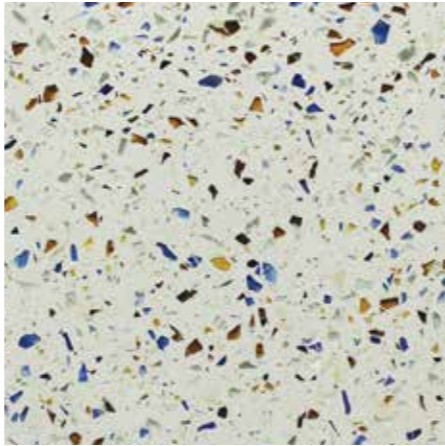
Jaisalmer Yellow with Glass
T2 Chips



White with Glass
T2 Chips



Sea Blue with Blue Glass
T1 Chips

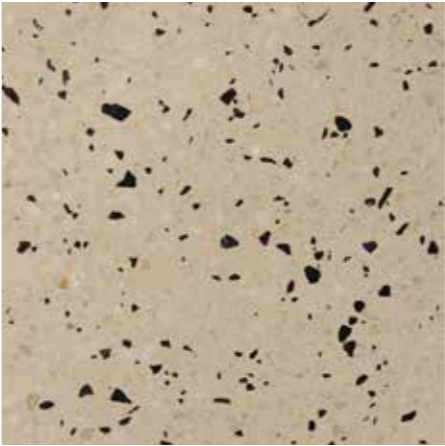


White with Mix Glass
T2 Chips

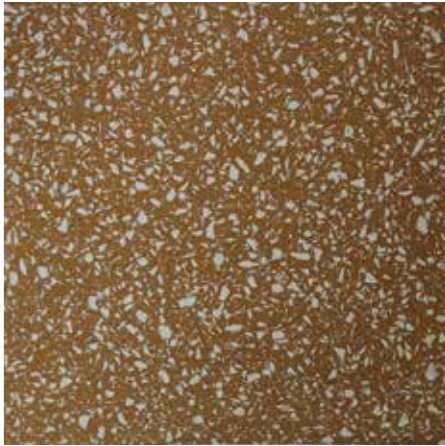
PREMIUM RANGE



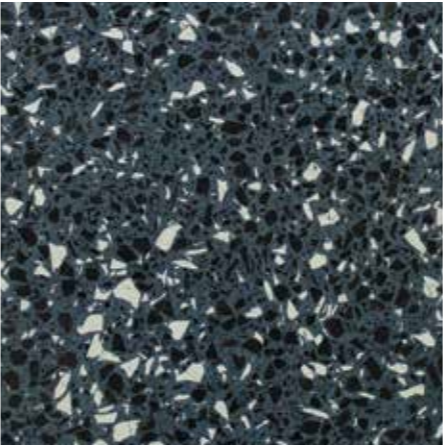
Black with Classic White
T2 Chips



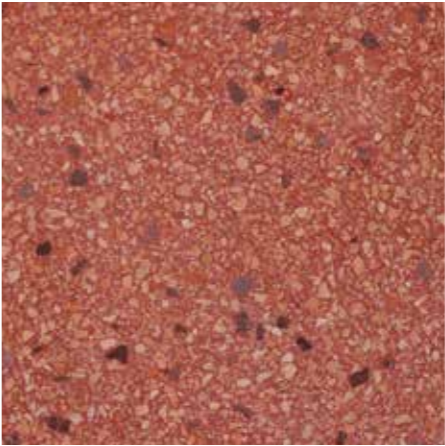
Sicilia with Italian Marble & Black
T2 Chips



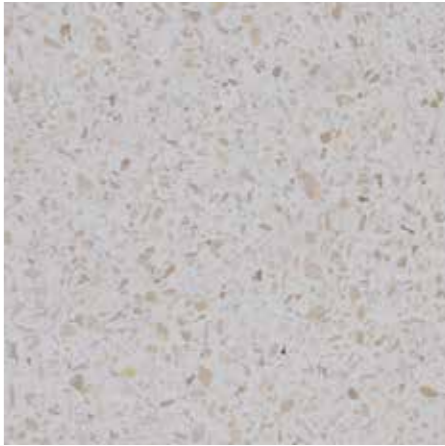
Fawn with White
T2 Chips



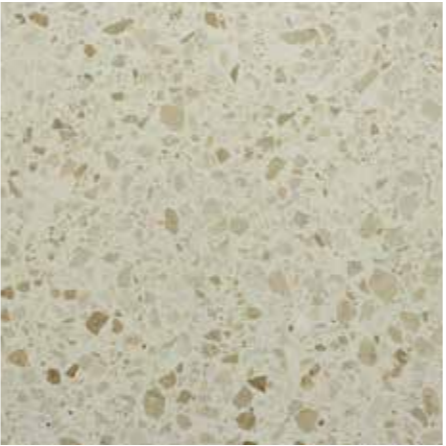
Dark Blue with Black & Classic
T3 Chips



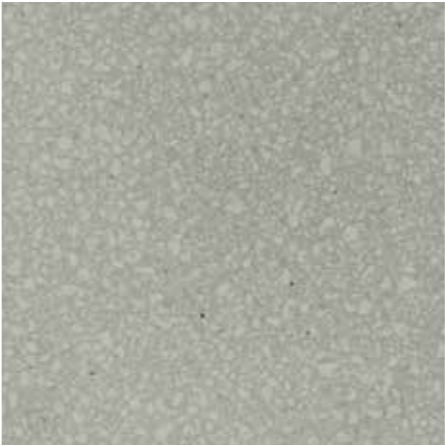
Terracotta Red with Red Verona
T2 Chips



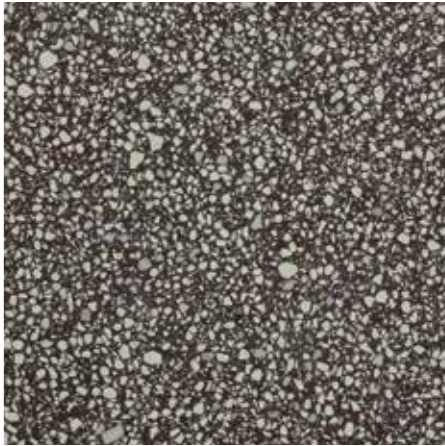
White with Italian Marble
T1 Chips



White with Italian Marble
T3 Chips



Silver Grey with Classic White
T2 Chips



Chocolate Brown with Classic White
T2 Chips

Floorings made with crystal glass collected from different sources, processed and mixed with colours and cement. Tiles formed are eco-friendly and beautiful. The glass forms jewel-like elements in the tile which reflect light creating a scintillating effect. Tiles can contain up to 50% by weight of recycled material which has been saved from going into a landfill. In addition, most of the stone chips used in manufacture of our tiles are produced from waste blocks of stone which are left over in quarries. With a long life cycle of upto 60 years. Terrazzo tiles prove to be the most eco-friendly option because floors can be re-polished as required instead of being replaced.

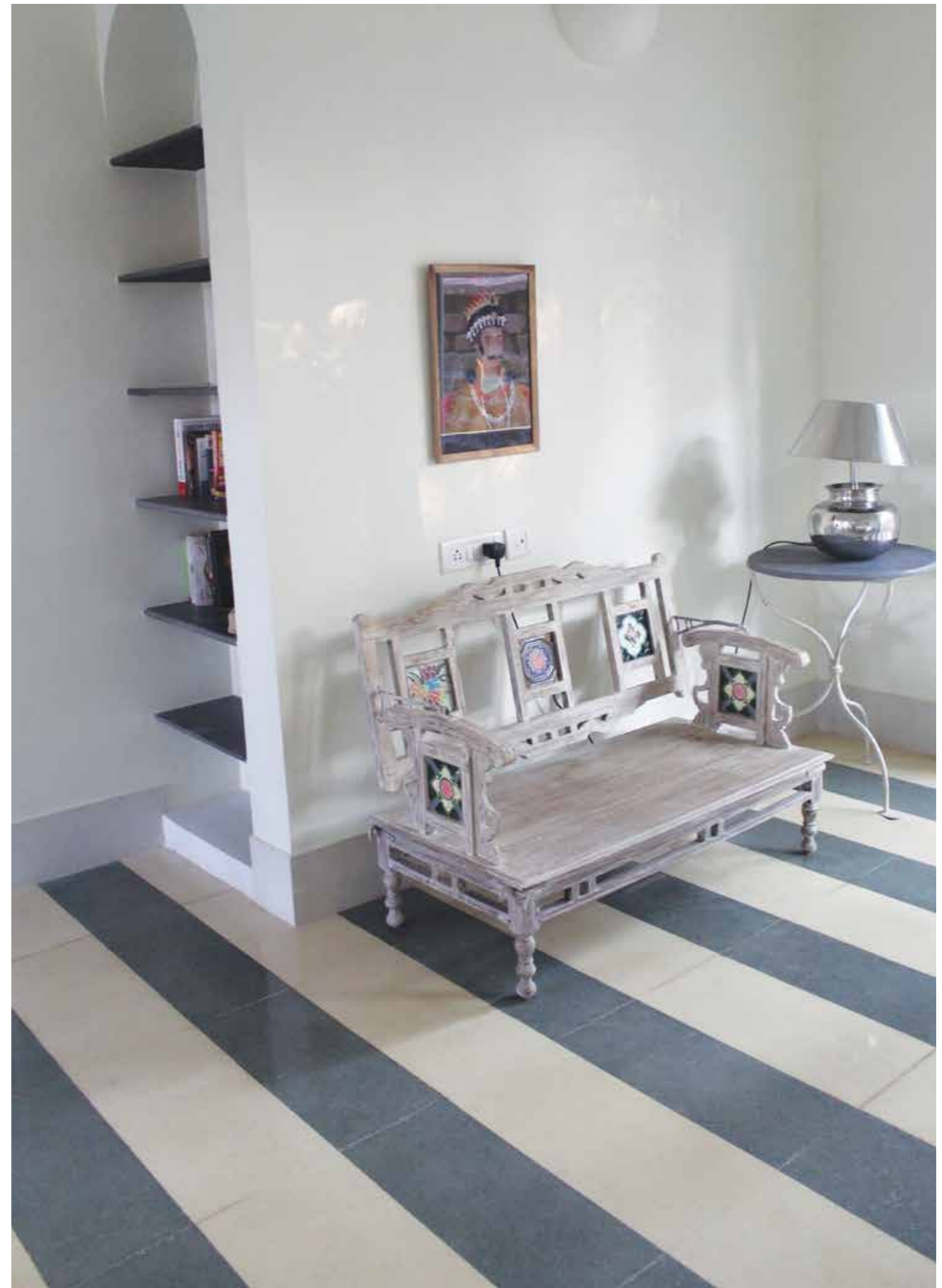
High-quality Bharat Terrazzo can achieve a look as stunning as the finest stone, in a range of colours and effects that stone can never achieve. These tiles have imported or expensive ingredients such as Italian Marble and Classic White Marble Chips which set them apart.

TERRAZZO: GRANDEZZA™

Grandezza™ is the largest size of Terrazzo tiles made by Bharat Floorings. Grandezza™ tiles are available in 30cm x 60cm as well as 2x2 ft. It's recommended to take Terrazzo Grandezza™ in larger chip sizes - i.e. T2 size and above, for better bonding of the cement. Terrazzo Grandezza™ has a range of 30 background colours, and a wide variety of chips and chip sizes with which to play.



Terrazzo Grandezza™ tiles (2ftx2ft) in Black and Grey at Delhi Club House.
Interiors: Headlight Design.



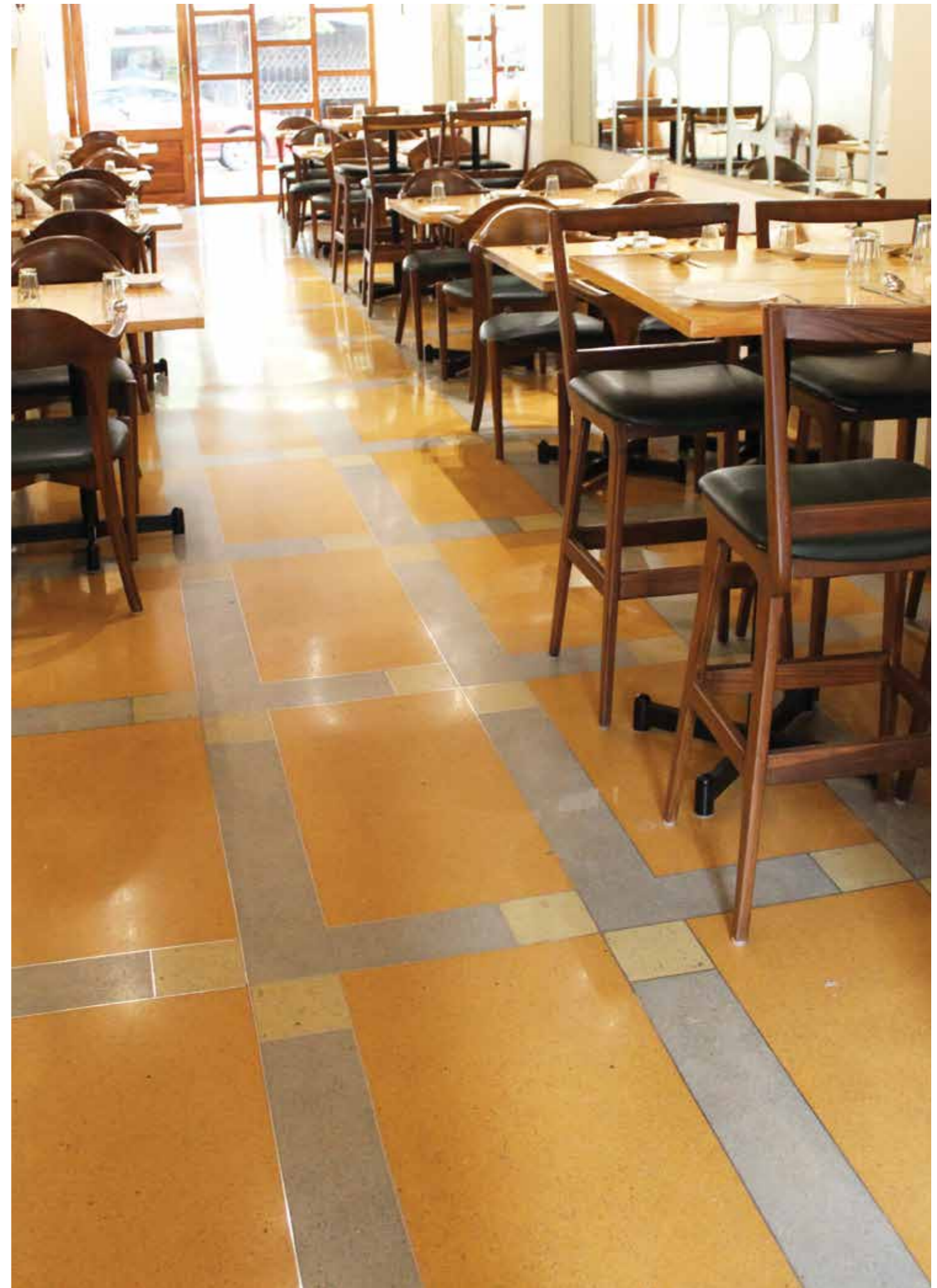
Terrazzo Grandezza™ (60cm x 30cm) in Dark Blue and Sicilia form a lovely striped pattern at a Villa in Goa.
Interiors: Alice von Baum

CAST IN SITU

Cast-In-Situ Terrazzo was originally invented by Venetian construction workers as a flooring material using marble chips. Even today Terrazzo is still most commonly made from small pieces of marble mixed with Portland Cement.



Cast in situ Terrazzo floor done using Brass strips and Cream Italian chips on White base, New Delhi.
Interiors: Nikhil Sehgal.



Cast in Situ Terrazzo tiles in Sunshine Yellow, Buttercup Yellow and Grey colours at Eddies Bistro, Mumbai.
Interiors: Studio Osmosis



Cast In Situ Terrazzo floor and wall in Grey and Light Silver Grey colours.

Interiors: Studio Osmosis

TECHNICAL SPECIFICATIONS

Premium and Art Deco Self Colour Terrazzo Tiles

Conforming to IS 1237

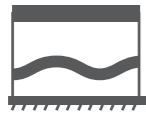
TECHNICAL DATA COMPOSITION

Topping White or grey cement, pigment, filler, marble, stone and glass chips

Backing Grey cement, Stone grit/ Dust

 Topping Layer - 10mm to 12mm

 Backing Layer - 13mm to 15mm



Wet Transverse Strength
Above 3N/mm²



Abrasion Test
Below 3.00 mm



Water Absorption
Below 10%



Standard Size
20cmx20cm, 25cmx25cm,
30cmx30cm, 40cmx40cm
30cmx60cm, 2ftx2ft



Thickness For Flooring Tile
25mm

COLOUR CHART



These colours are indicative cement colour shades will be slightly different from printed colours. Though we use the finest ingredients and blend with the utmost care, variations in the shades of raw material can lead to variations between batches. These are the hallmark and charm of handcrafted products.

Note: Blue and Green colours are not recommended for use in sunlight.



Bharat Floorings & Tiles (Mumbai) Pvt. Ltd

32, Mumbai Samachar Marg, Ground Floor, Next to Stock Exchange, Fort, Mumbai - 400 023

Tel: 91 (22) 4057 4400, 23, 44 • E-mail: info@bharatfloorings.com • Website: www.bharatfloorings.com



[bharatfloorings](#)



[BharatFloors](#)

© 2017 BFT. All rights reserved.

Bharat Floorings & Tiles Pvt. Ltd. is the owner of the artistic works published herein. No artistic work forming part of this publication may be reproduced in any form or by electronic or mechanical means without the permission in writing of the copyright owner.